

# LM Transit

**Little Master Transit (LM-T)** series are one-time use portable temperature data loggers. Ideal for recording temperature during shipping and transport, LM Transit series are easy to use, accurate and affordable solutions for your shipment temperature monitoring in transit. Waterproof (IP65) ensures that you can place them in the most demanding of environments. **EN 12830** compliance assures you the quality and the reliability. The bright fluorescent color makes it easy to identify at destination for easy retrieval.

## Key Features :

- Easy to Use
- Indication for start of logging
- Cost Effective, single use data logger
- Built-in memory to record upto 4000/8000/16000/32000 data records
- Storage resolution 0.01
- EN12830 Compliant
- Direct connection to PC's USB port

## Specifications:

### Display and Operator Panels:

Display Type	None
Status Indicator	Red LED for Device working Red LED for Batch Start / Stop
Panel Keys	None

### Memory

Data Storage	Yes
Memory	4000/8000/16000/32000 Data Records
Memory Type	Flash, Non-volatile, Data Retention up to 100 years

### Analog Input Details

No. Of Channels	1 (Temperature Input)
Temperature Measurement Accuracy	± 0.1% FSR

### Sensor Details

Temperature	10K Thermistor; NTC; Internal to the device
Temperature Range	-30 to + 65 °C (-22 to +149 °F)
Sensor Response Time	30 min for step change of 50 Deg C
Sensor Accuracy	± 0.5 °C (± 0.9 °F)
Sensor Resolution	0.01

### Batch Details

Start/Stop	Immediate on pulling TAB
Batch Stop	When Memory is full
Delayed Start	No
Logging Interval	Refer to order code
Download Batch	Intermediate after any time the batch started/ After the Batch is completed

### Environmental

Temperature	(Operation)-30°C to 60°C (Limiting) -35°C to 70°C (Storage) -35°C to 70°C
Humidity	(Operation)0 to 100% RH

### Power Requirement :

Supply Voltage (Battery Operated)	3.0 V 240MAH; CR2032 Panasonic Coin Cell Battery; User Replaceable
Battery Life	>1 Year, at 25°C and 15min Store Interval
Battery Reverse Polarity	Protected



**EN12830**  
compliant

### General

User Calibration Feature	Factory Calibrated
Reusability	None. One time use, Disposable
Online Feature	Power saver mode when USB connected, Online Batch with Current Data Display using LmView software on PC

### Confirmatory Standards

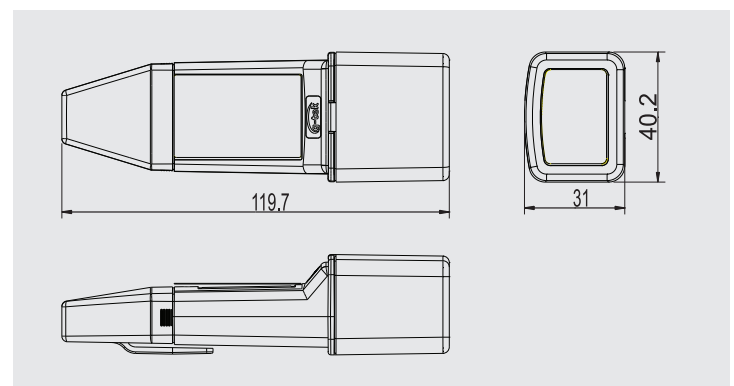
Product	EN 12830
EMI-EMC	EN 61326 Class A
Pollution Degree	II
Installation Category	IV
Vibration	2g Peak (10Hz-150Hz)
Shock	IEC 61010-1
IP Rating	IP65

### Communication

Connectivity	USB 2.0, USB 3.0 Compatible
Data Download Time	approx 3 sec for 32000 data records

### Overall Dimension

Dimension	120 (L) x 40 (W) x 31\ (H)
Mounting	From the Clip provided on the cap



# LM Transit

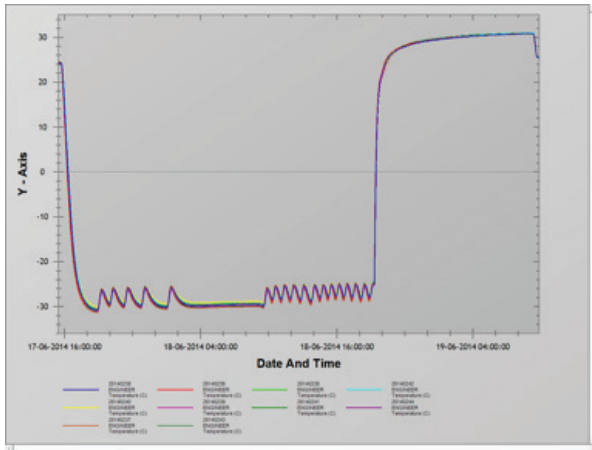
• Your Ordering Code : mail to [sales@gtek-india.com](mailto:sales@gtek-india.com)

## LmView™: An over view

This software is an accompaniment to the LM series of data logger to configure, download, view and generate reports.

### Key Features:

- Intuitive and user friendly – Few keys / buttons to play with.
- 21 CFR Part II compliant
- View audit trail based on USER, based on DATE and TIME or based on ACTIVITY
- Non editable data
- Every user activity is logged
- Auto log out of user
- Password expiry
- Configure multiple data loggers simultaneously
- Download multiple data loggers in a single file
- View multiple data logger's data as a single tabular data
- View multiple data loggers in a single graph
- Very useful for validation purpose



- Mark an event or Tag
- Generate separate report of Tags
- View Tags in Graph as well

Sr.No	Date And Time	ENGINE ER Temper	ENGINE ER Humidit	ENGINE ER Temper	ENGINE ER Humidit	ENGINE ER Temper	ENGINE ER Humidit
1	04-02-2014 12:30:00	24.86	67.17	24.85	65.16	24.77	
TAG	04-02-2014 12:30:31	24.79	66.87	-	-	-	-
TAG	04-02-2014 12:31:31	-	-	24.71	68.49	-	-
2	04-02-2014 12:32:00	24.66	71.15	24.62	69.58	24.76	
TAG	04-02-2014 12:33:00	-	-	-	-	24.68	-

- Filter the data based on Time
- Statistical calculations like Min/Max / Average / MKT
- Out of range time calculation
- Include graph in report as an image
- Various date formats
- User can set resolution of the data.
- Set your own header and footer for the report
- On Site Calibration / Restore factory calibration

Dealer / Representative

---

The specifications given above are an overview, and may be or may not be available in all product variants, or at an additional cost. The company reserves the right to change the specifications without prior notice, as the company follows a continual improvement philosophy for its products.

Select your ORDER Code:     -

Example ORDER Code:     -

Code : LM Type  
4 : LM Direct  
USB Transit

Code : Display  
0 : No Display

Code : Sensor Type  
0 : Temp.

Code : Sensor Internal / External  
0 : Internal Sensor

Code : Memory  
0 : 4000 data  
1 : 8000 data  
2 : 16000 data  
3 : 32000 data

Code : Store Interval  
0 : Pl. Specify  
1 : 5 min  
2 : 10 min  
3 : 15 min  
4 : 30 min  
5 : 45 min  
6 : 60 min  
7 : 120 min



Manufacturers of :

- Circular Chart Recorders
- Strip Chart Recorders
- Inkless Recorders
- Paperless Recorders
- Scanners & Data Loggers
- Networked Data Loggers
- Application Software
- Web based DAQ

**G-TEK CORPORATION**

3, mahavir estate, karelibaug  
vadodara-390 018  
tel.: +91-265-2461912  
+91-265-3935701 - 24  
e-mail: [info@gtek-india.com](mailto:info@gtek-india.com)  
url: [www.gtek-india.com](http://www.gtek-india.com)